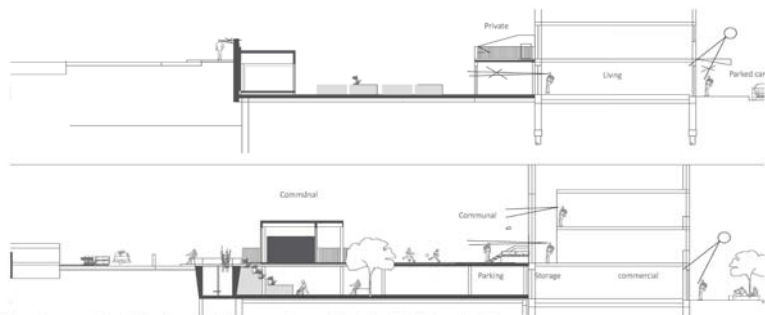


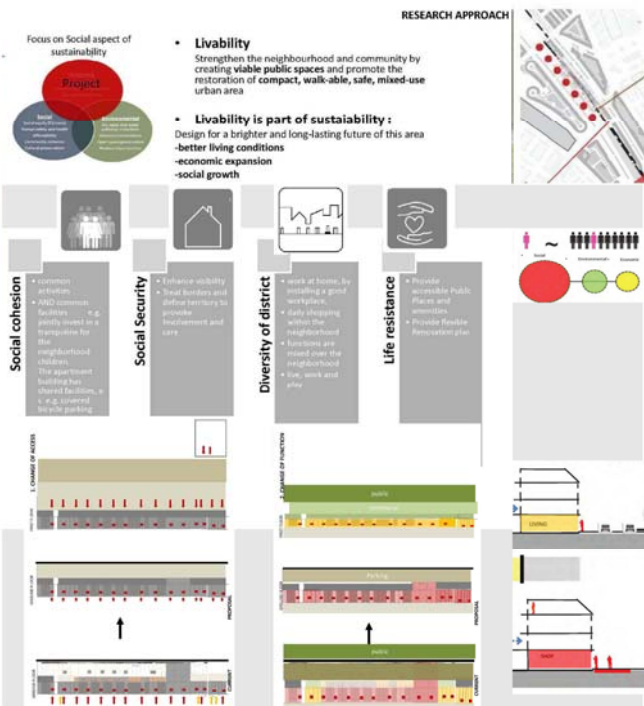
## Towards a liveable neighborhood: Oranjeboom street, Feijenoord, Rotterdam



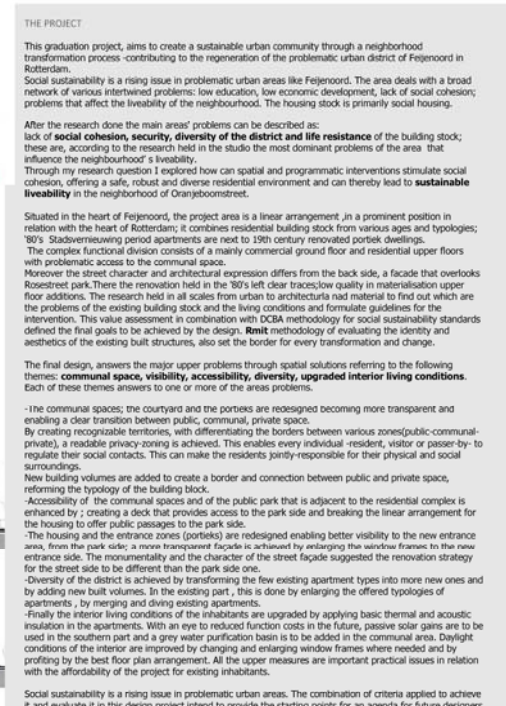
Image of the area



Schematic representation of the transformation of the communal space and its relation with the living quality of the housing.



The change of access and change of function proposed, diagrammatically shown



S1 SECTION COMMUNAL YARD



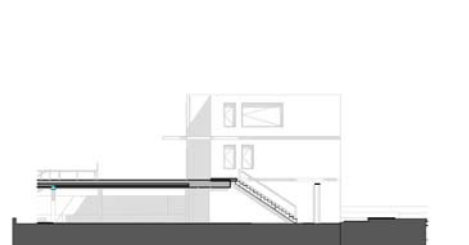
ELEVATION\_ NW SIDE ENTRANCE



The renovated facades in ground floor layer on street side; Sitting spots are added, in the totally public ground floor



The new main entrance from the park side in first floor level. The entrance hosts a shop for the people to sell the food.



SECTION ON NW ENTRANCE



The NW side entrance to the complex, and the new facade created by the added volumes on this side.



STREET FACADE



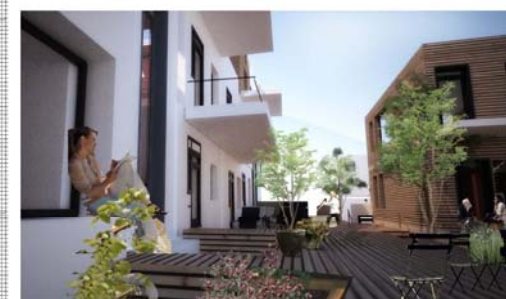
1:200



1ST FLOOR PLAN SCALE 1 : 200



The transformation of the portiek in the 19th century housing; before and after situation; enhancing visibility to the entrance zone and access of the housing



The use of the communal space; a vibrant interaction space