

THE ZUIDERPARK

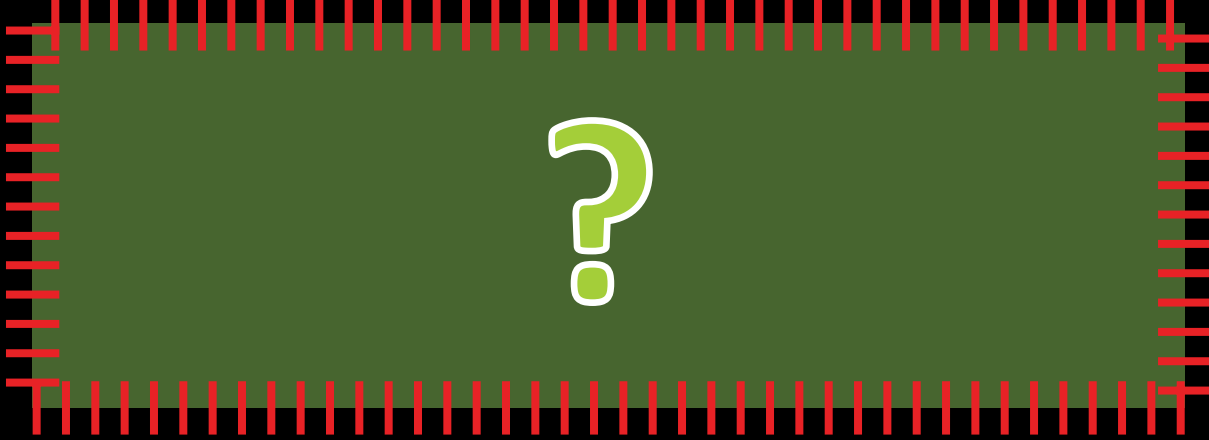
ZUIDERPARK

Reach	Density	Uniqueness	Mixed functions	Connectivity	Accessibility	Routing	Identity	Total	Total*
+ -	-	++	+ -	+	+	+	+ -	4+	4+

* The Factor Identity has been counted 3 times



Low density in the surroundings of the park



Park is not recognisable from the outside

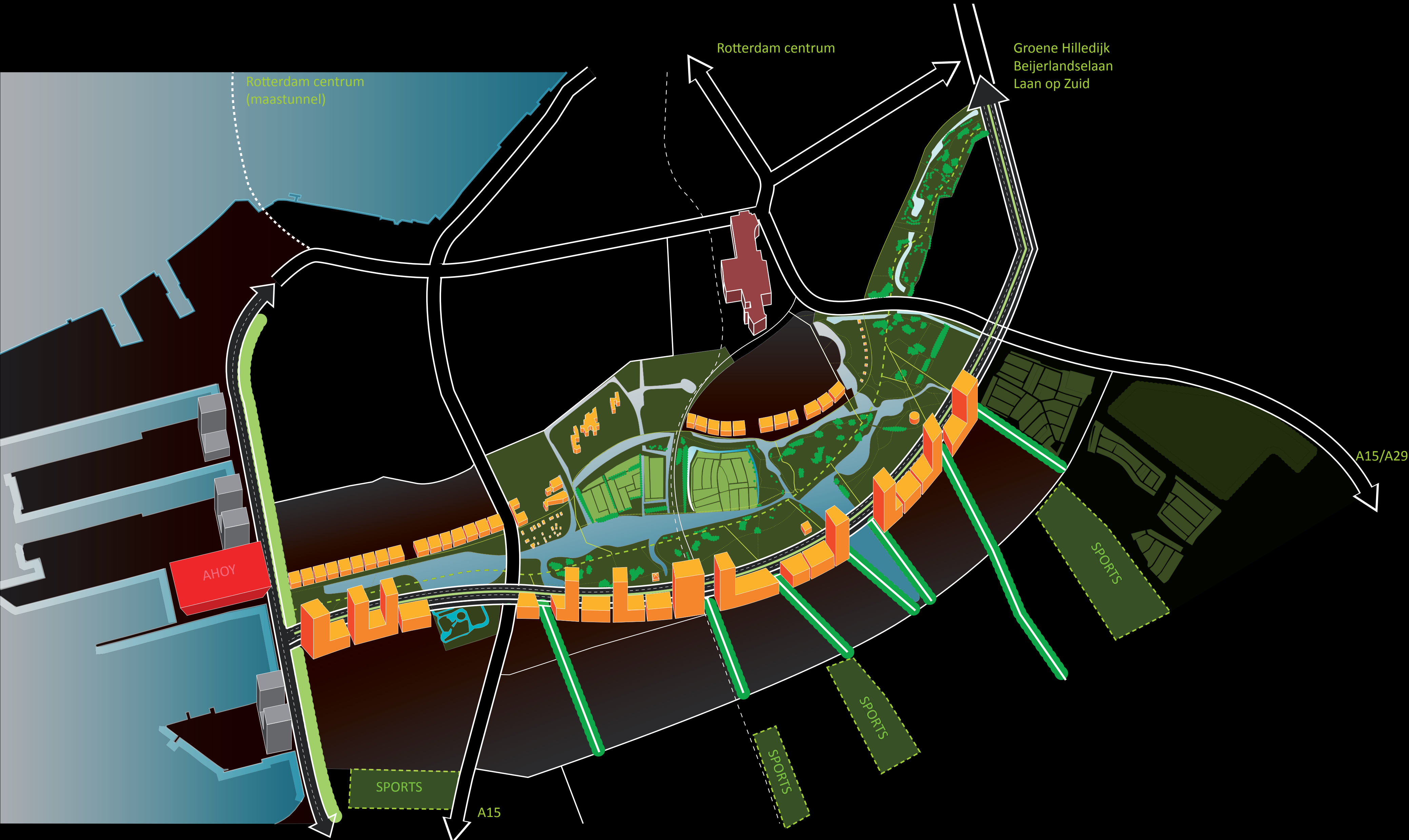
From the analysis it became clear that the Zuiderpark has a high or modest score for most of the themes. The themes for which the park has a lower score is the density. On top of that there are not many people who can identify themselves with the park. Besides the low density of the surroundings, the identity is the largest problem of the park. The identity scores lower because of the park is not very well integrated in its urban surroundings (road system and sport fields form barriers).

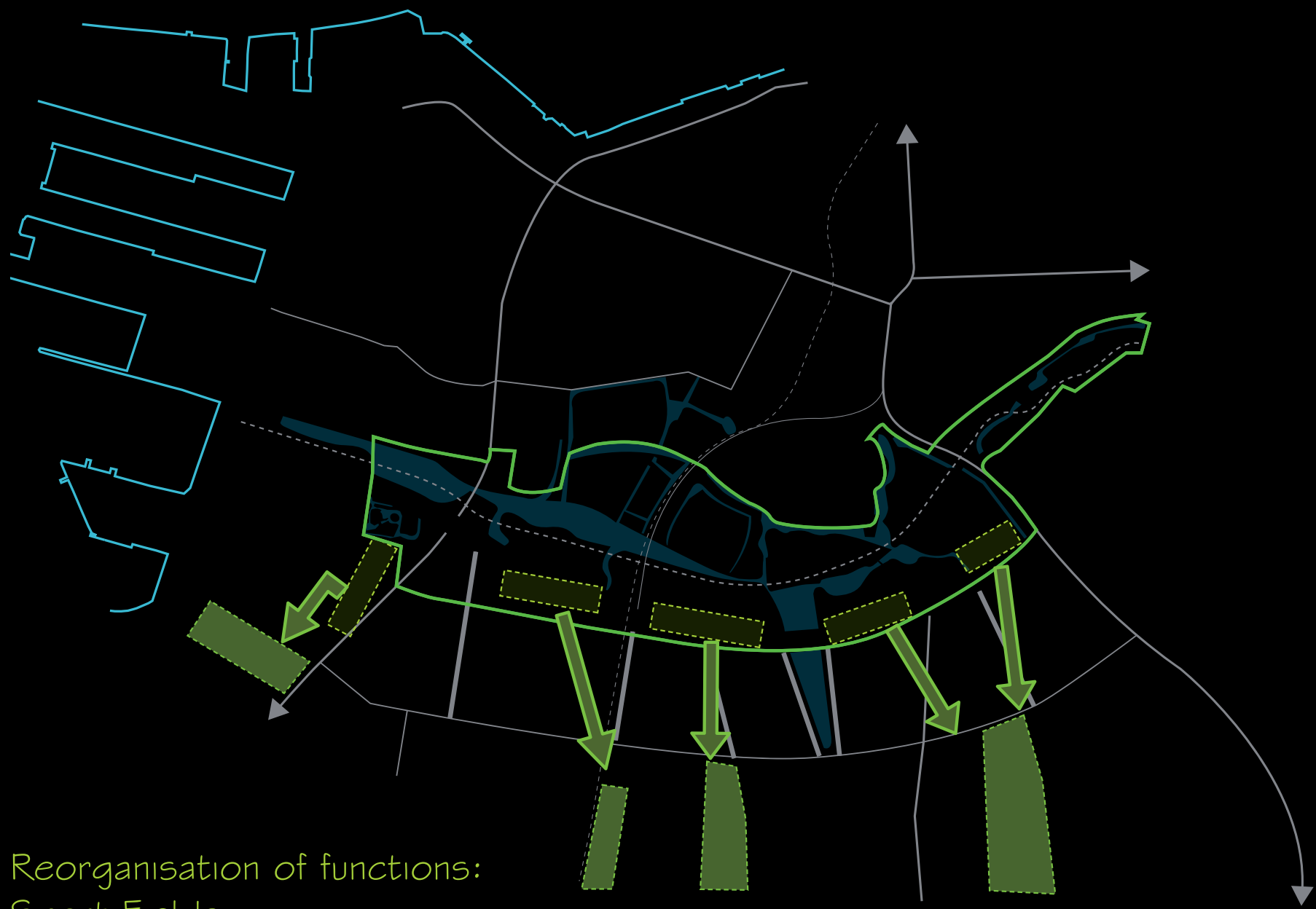
ENVIRONMENT OF THE ZUIDERPARK

The Zuiderpark is well connected to its surroundings. Long infrastructural lines reach the city center. However, the park does not use the potentials of these lines. One of the important, internal lines is the Oldegaarde-Groene Hilledijk - Beijerlandselaan. This route forms the basis of our proposal: Zuidboulevard. The Zuidboulevard is connected to the waterfront development (West) and the city center (North) via the Laan op Zuid. Moreover it connects to the possible new bridge near the Putselaan. Due to the development of the Zuidboulevard a positive impulse can be given to the social economic and physical issues where Rotterdam Zuid is dealing with at the moment. The attractiveness of this part of the city for inhabitants and visitors will rise. This is in line with the ambitions of the municipality who wants to make a definitive step towards a young appealing city in which everyone could live. The new area around the Zuiderpark can be used to make high quality urban area, in this area there will be space for young potentials, young urban families, creative class and the “zilveren golf”, wealthy old-Rotterdam inhabitants can be attracted and preserved.

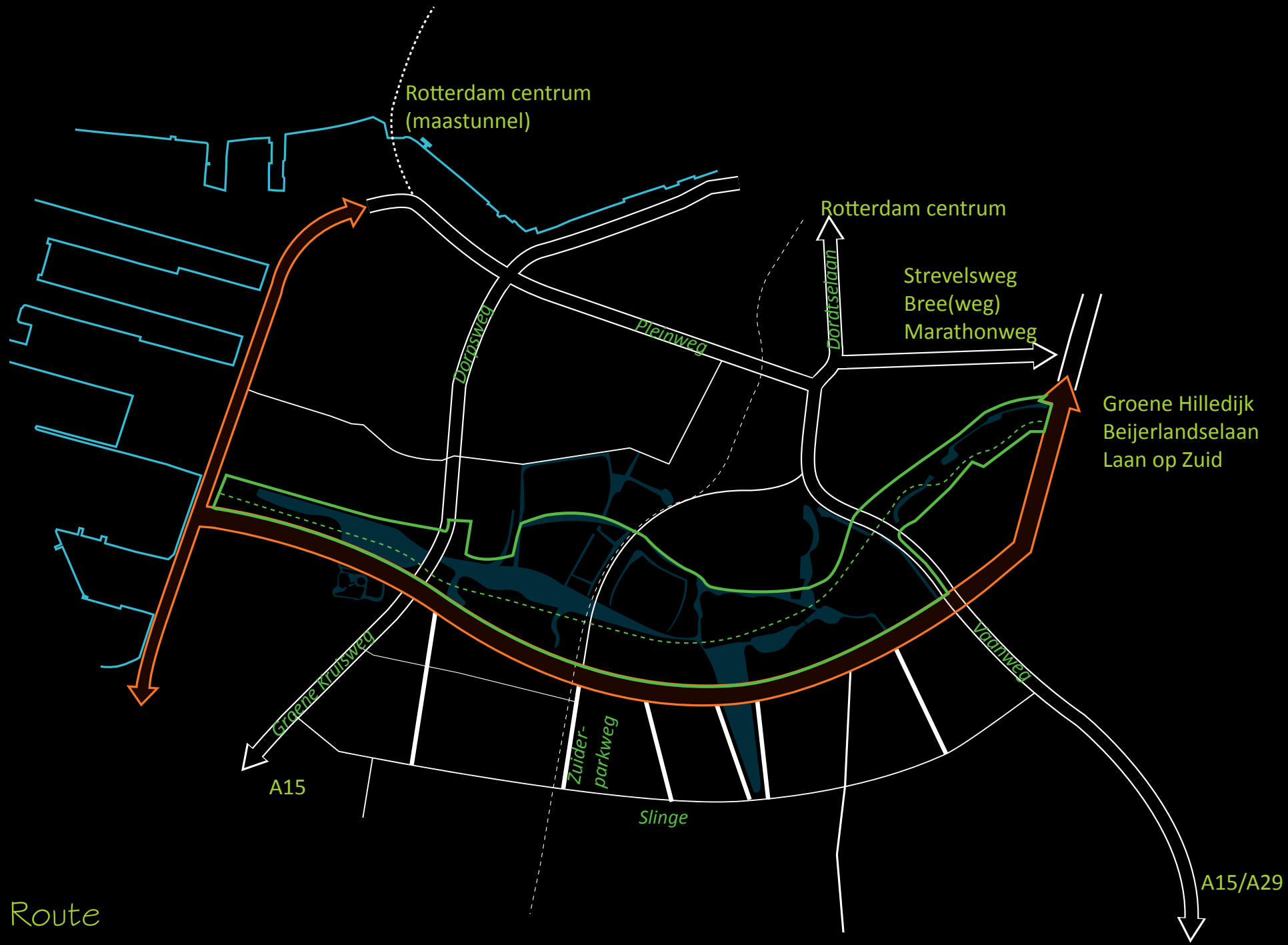


CONCEPTUAL DESIGN - ZUIDBOULEVARD

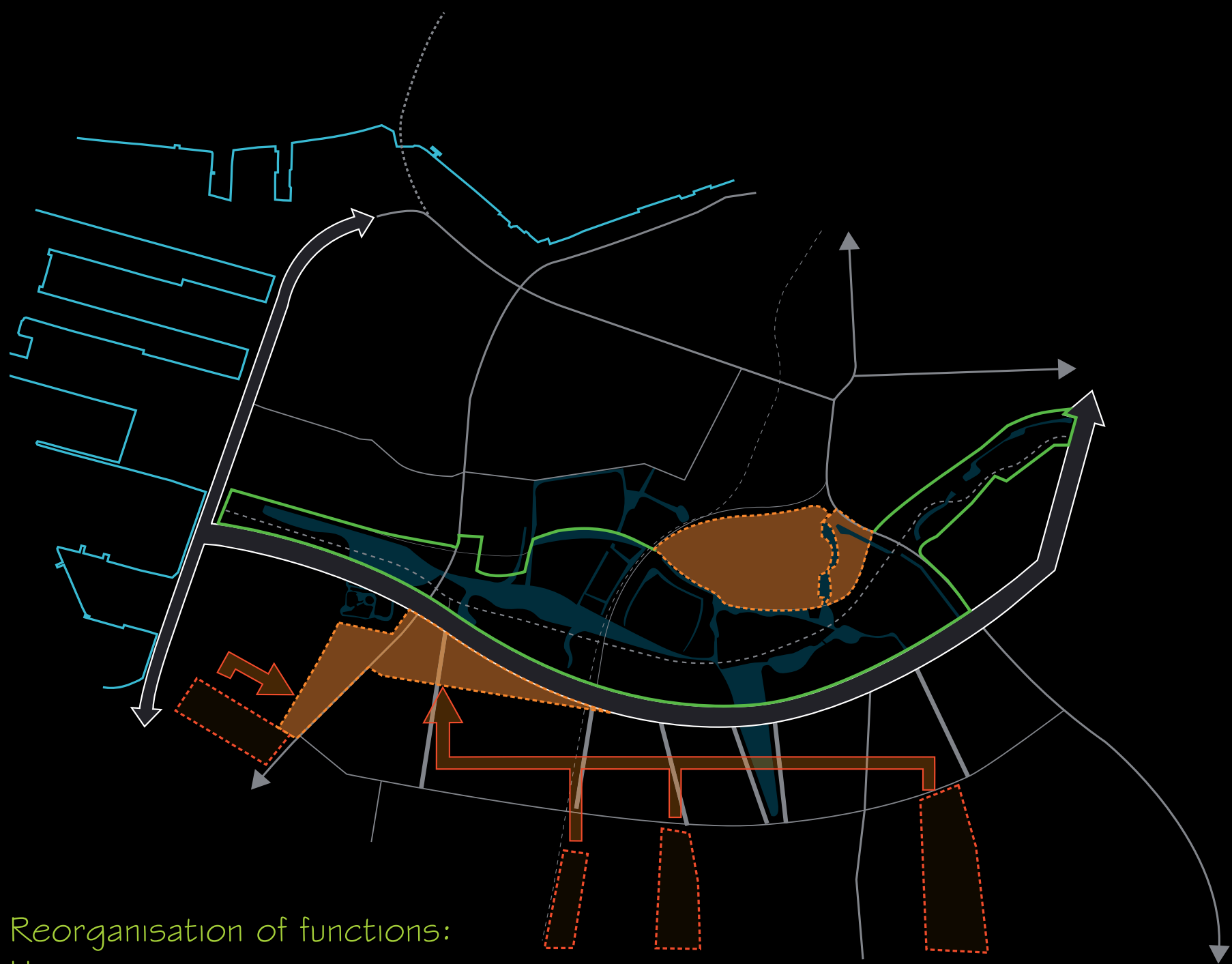




Reorganisation of functions:
Sport Fields



Route

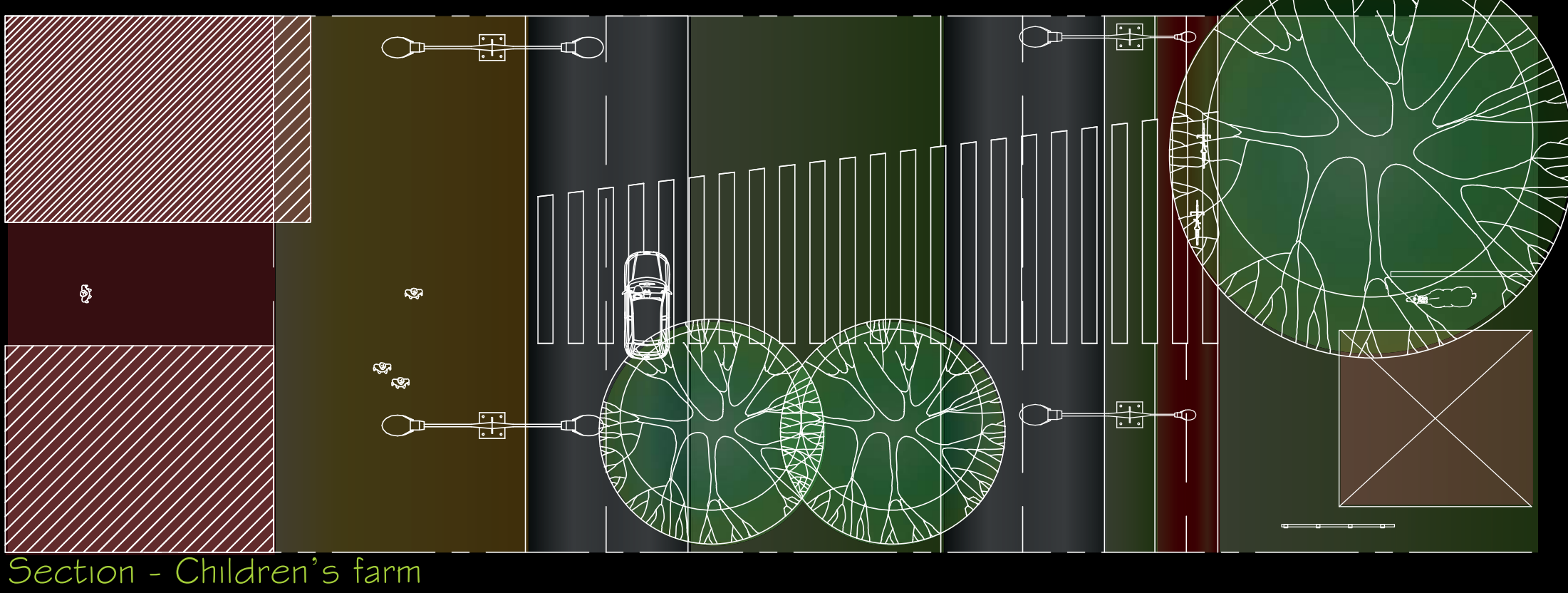
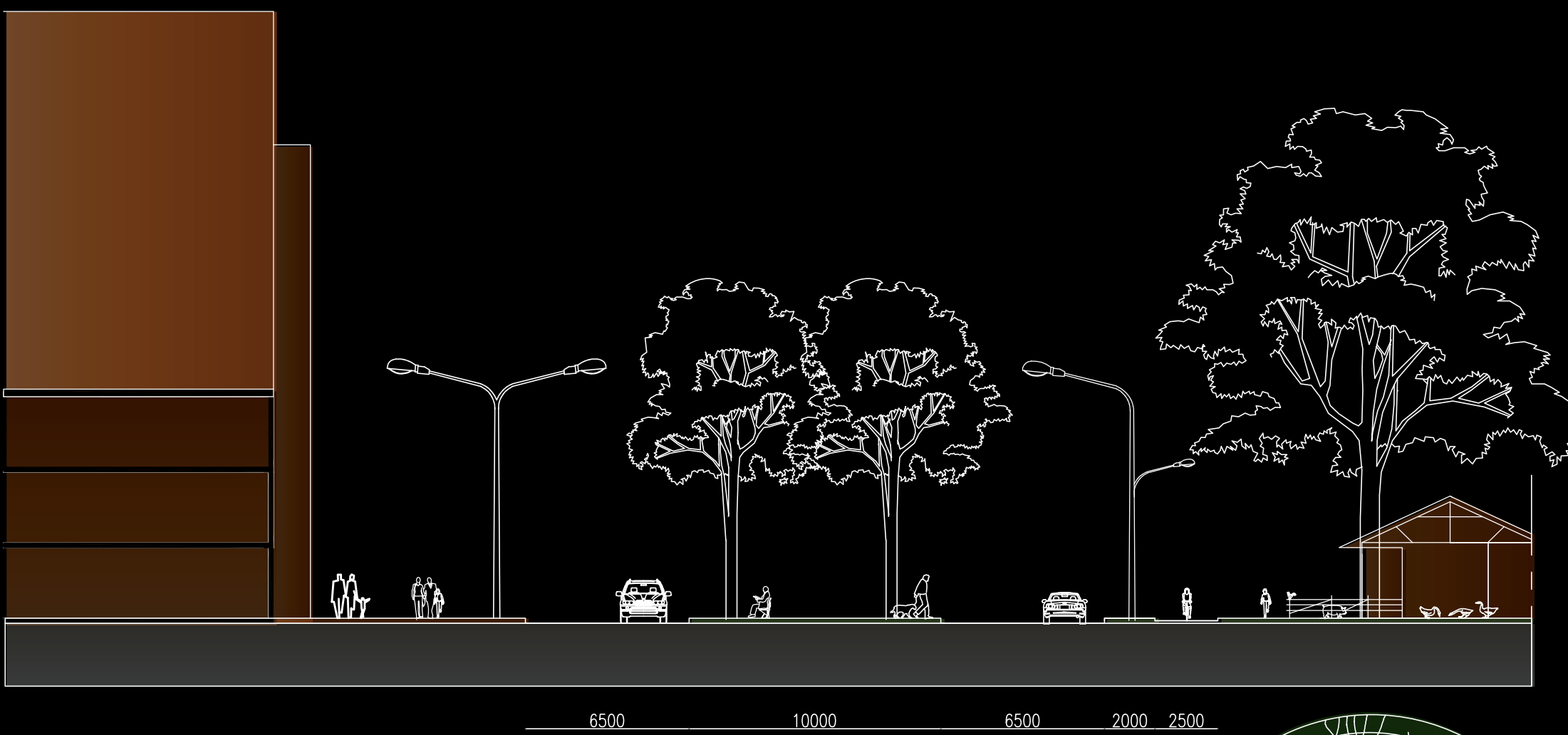
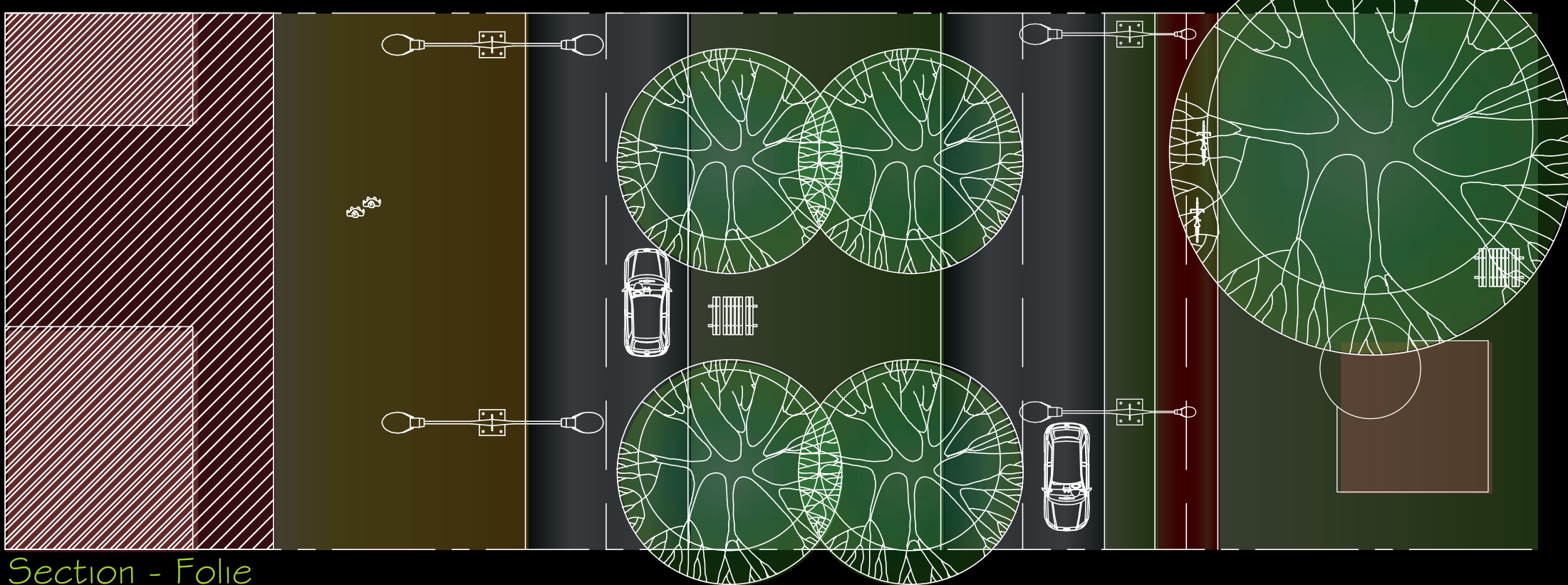
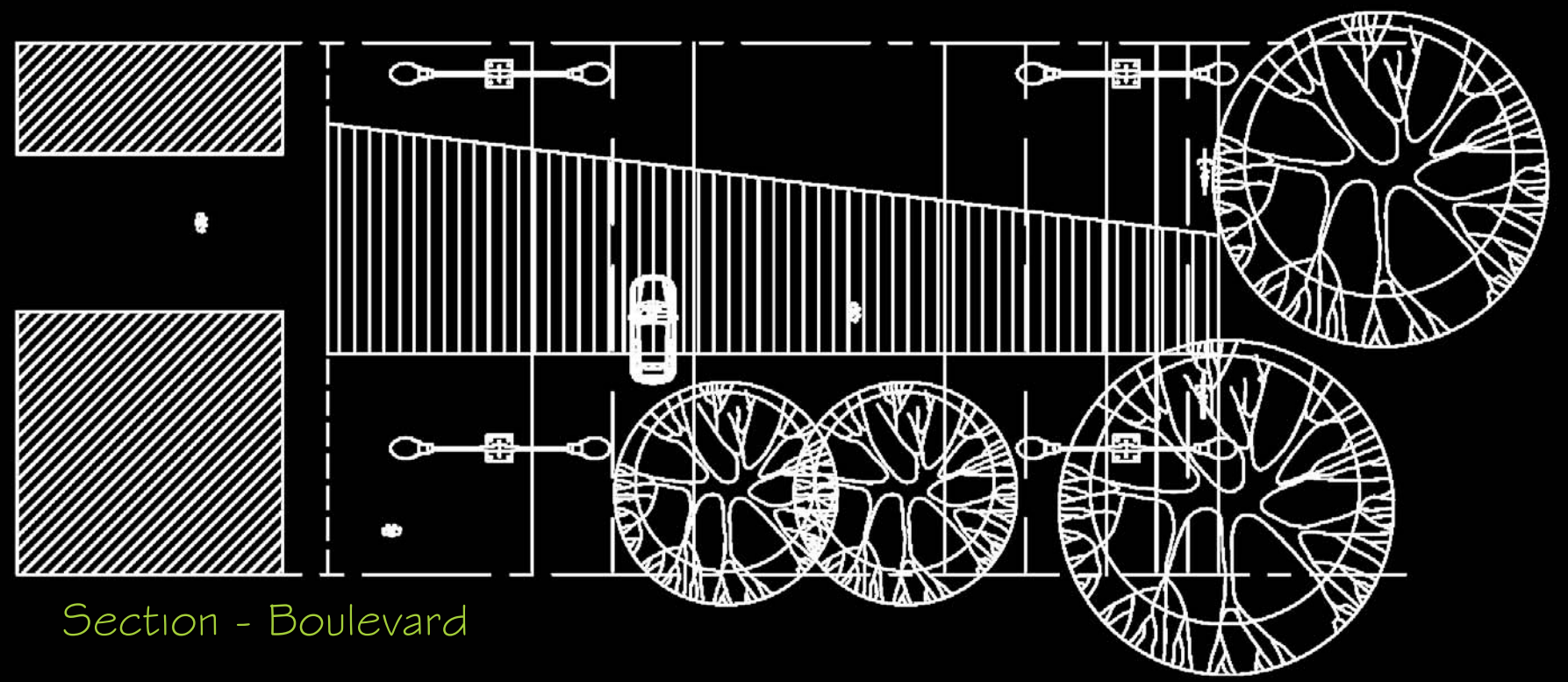
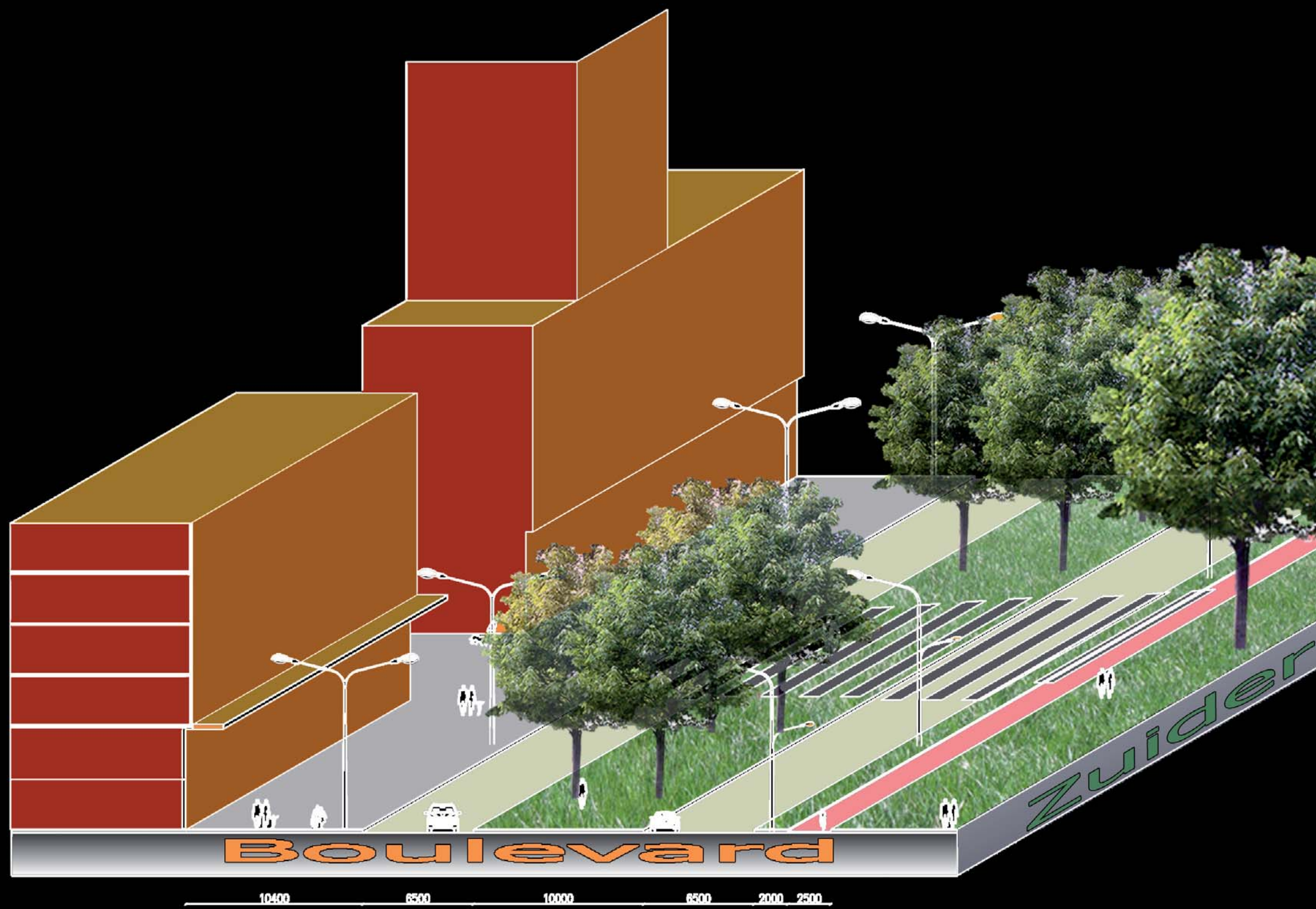


Reorganisation of functions:
Housing



Relation between park and urban area

SECTIONS - DESIGN PRINCIPLE OF ZUIDBOULEVARD



SKETCHES - ZUIDBOULEVARD



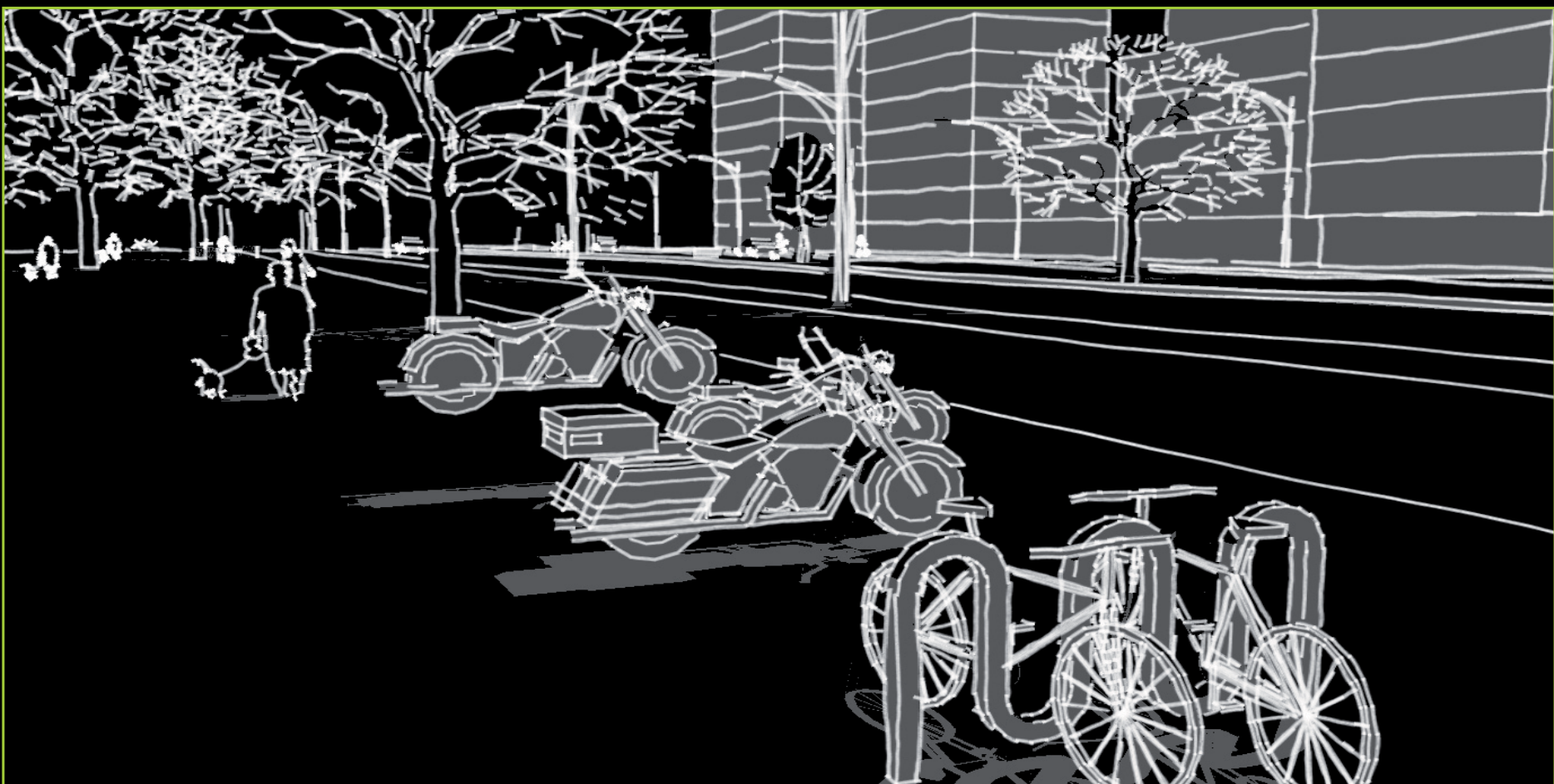
Birds eye view boulevard



View boulevard



Transition park to boulevard

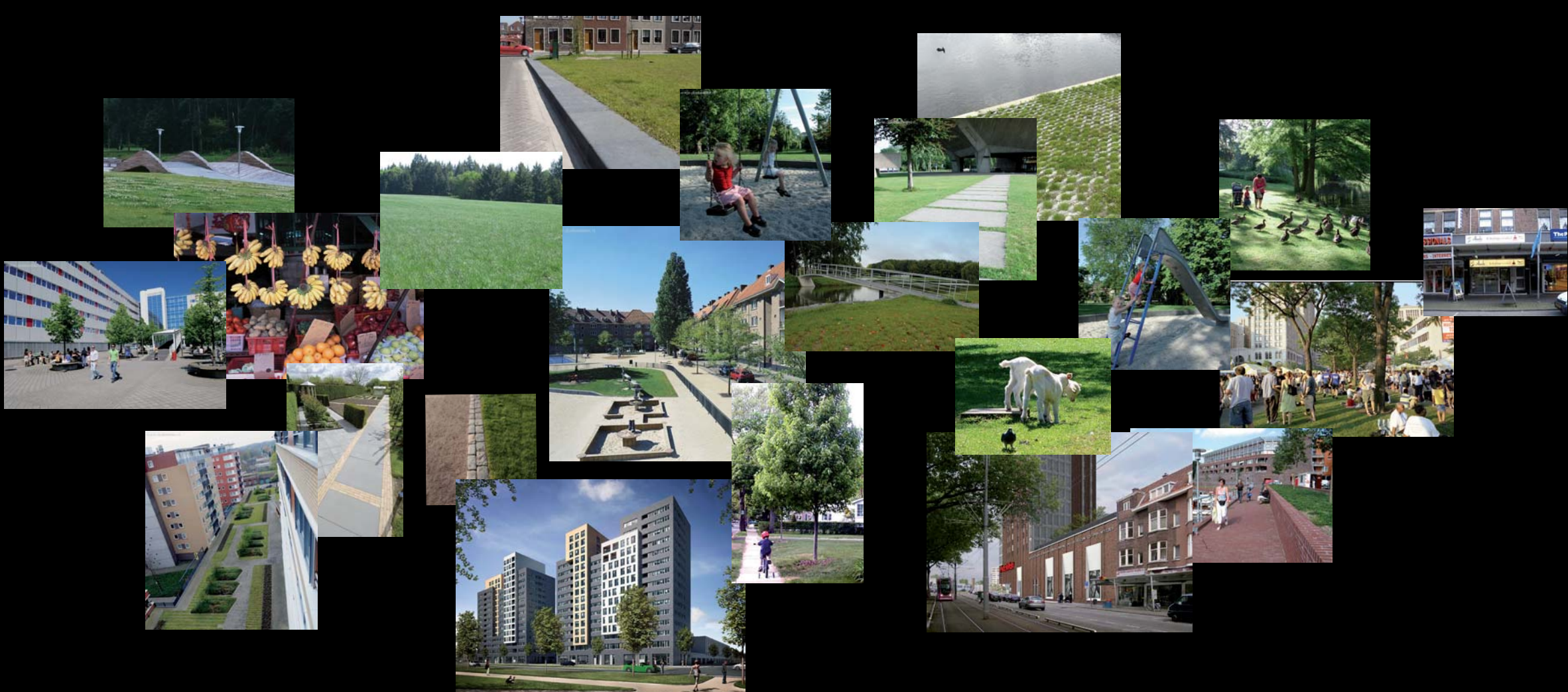


Parking space along boulevard

IMAGES OF THE ZUIDBOULEVARD



Boulevard as transition between urban area and park



Boulevard as transition between urban area and park

RESULTS OF THE INTERVENTION

ZUIDERPARK WITH BOULEVARD

Reach	Density	Uniqueness	Mixed functions	Connectivity	Accessibility	Routing	Identity	Total	Total*
+	+ -	++	+	+	+	+	++	9+	13+

Legenda

negativ aspect

positiv aspect

Old situation

New situation

infrastructure

transition zone

passing by

sport

volkspark

blue structure

allotment

boring

pond

borders

semi-public

infrastructure

transition zone

passing by

culture

blue structure

recognisable

readability high

pond

semi-public

* The Factor Identity has been counted 3 times

The development of the Zuidboulevard will bring advantages for the Zuiderpark. With little changes, a lot will be improved. From the analysis it became clear that the identity of the Zuiderpark was relatively low. This was due to the fact that the park was not visible and that there were barriers along the borders. The Zuidboulevard will change these negative conditions. By changing especially the southern border of the park, the Zuiderpark will be more recognizable and readable for inhabitants and other visitors. In other words the park becomes visible again. Which will improve the identity of the Zuiderpark. With the rearrangement of functions, the sport fields will leave the park and housing and extra function will be added to these areas. In this way the size of the park is reduced. This has effects on the population and function density. Which will positively effect the scores of the former analysis.